

Anagram Club



vitra.



Anagram Club

Panter&Tourron, 2026

vitra.



Anagram Club is a modular system, making it possible to easily adapt sofa configurations to changing needs. The platform modules can be combined with other modules on all four sides and fitted with backrests, side panels and attachable tables. Thanks to an ingenious click mechanism, these elements can be freely positioned anywhere on the platform and rearranged in a matter of seconds. This enables countless configuration options and effortless layout changes - from waiting-area seating, collaborative landscapes, communication-friendly S-shaped configurations and island-like meeting points in the centre of the room to classic L-shaped sofas and many other arrangements. For additional flexibility, Anagram Club is also available on castors.

With its compact dimensions and seating geometry that combines an active, upright sitting position with inviting comfort, Anagram Club is ideal for offices, lobbies, co-working lounges and similar settings where informal encounters and meetings occur - as well as zones designed for retreat, such as libraries,

hotels or open offices. In residential environments, the sofa appeals to those who appreciate slightly firmer upholstery and clean lines.

The seat cushions are made from V-Foam, developed by Vitra in collaboration with BASF as the world's first economically recyclable polyurethane foam, while the back cushions contain recycled PET ball fibre. The easy-care cushions retain their shape, and the seat covers are available in a choice of leather or high-quality fabrics in a wide range of colours, and can be removed for cleaning or replacement.

The robust, lightweight frame is made of aluminium with 80% recycled content and, like all Anagram components - nothing is glued, laminated or foamed. This means that the individual components, which are manufactured from recycled materials wherever possible, can be easily separated at the end of the product's life and recycled again.

1-11	Anagram Club
12-27	Click & play
28-31	Exchange & renew
32-33	Maintenance

34	Certificates
36-	Pause & connect
52-64	Colours and materials
65-67	Dimensions





Materials

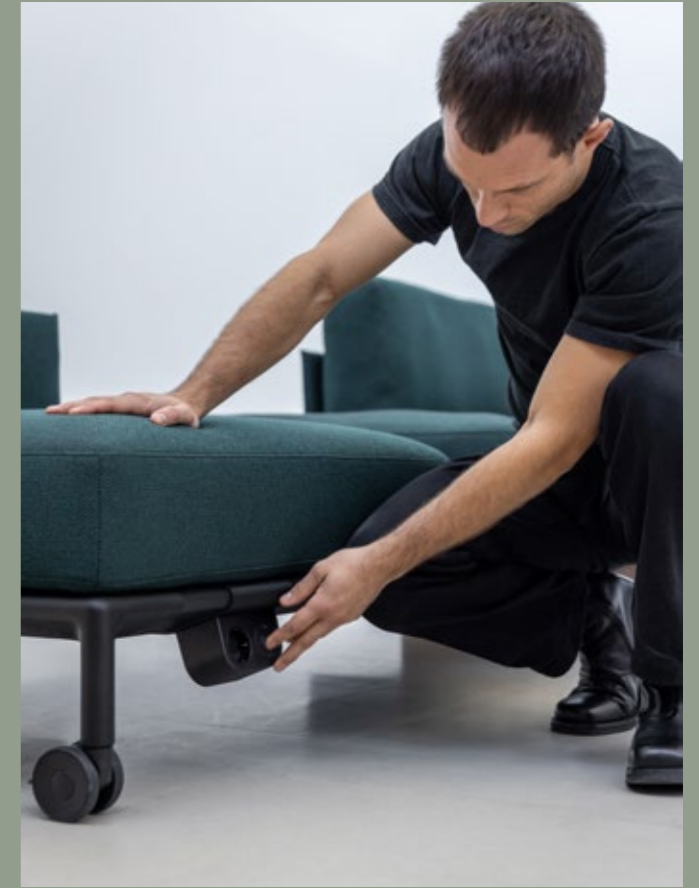
- **Legs and frame:** recycled aluminium, powder-coated.
- **Glides:** non-slip, black.
- **Castors:** lockable, in black plastic, soft version for protection of hard floors.
- **Seat cushions:** recycled polypropylene shell, polyurethane foam core, V-Foam padding, clip fittings in recycled polyamide.
- **Seat height:** 420 mm (305 mm with applied load, measured in accordance with EN 1335-1:2000).
- **Platform table top:** veneer or powder-coated MDF with support brackets made of recycled polypropylene, table thickness 25 mm.
- **Platform connectors:** recycled polyamide. At least two platform connectors are required to attach two platforms together.
- **Panels:** integrated biofibre board, polyester fibre and cover.
- **Mounting bracket with tension strap for panels and attachable tables:** bracket made of recycled polyamide, tension strap in polyester.
- **Backrest cushions:** filling made of 100% recycled PET fibres from post-consumer waste. Cushions should be regularly shaken and plumped to retain their fullness and shape.
- **Covers:** removable. To avoid shrinkage or damage, covers should be professionally cleaned – do not put in the washing machine. A torque spanner is required to change panel covers or to install a new mounting bracket. Note: assembly instructions and/or service videos are available at vitra.com.
- **Attachable tables:** fixed or swivel-mounted, either solid wood in a choice of ash with black lacquer finish, natural oak or ash with oiled finish in cotton white or MDF powder-coated in basic dark.
- **Origin of wood:** oak (*Quercus robur*) and ash (*Fraxinus excelsior*) from Western Europe and/or Poland.
- **Electrification:** bracket for platform frame in powder-coated steel, basic dark; double socket with twin 25W USB ports and 1 power outlet. 3m cable with self-adhesive clips for cable management. The bracket can be freely positioned on the platform frame without the use of tools.
- **Magazine holder:** powder-coated aluminium.
- **Note:** the 550 x 300 mm cushion can be used both as a backrest cushion and as an armrest cushion.
- **Note:** sockets cannot be positioned at the same height as panels or attachable tables.
- **Note:** configurations on castors cannot be equipped with power options.





Panter&Tourron

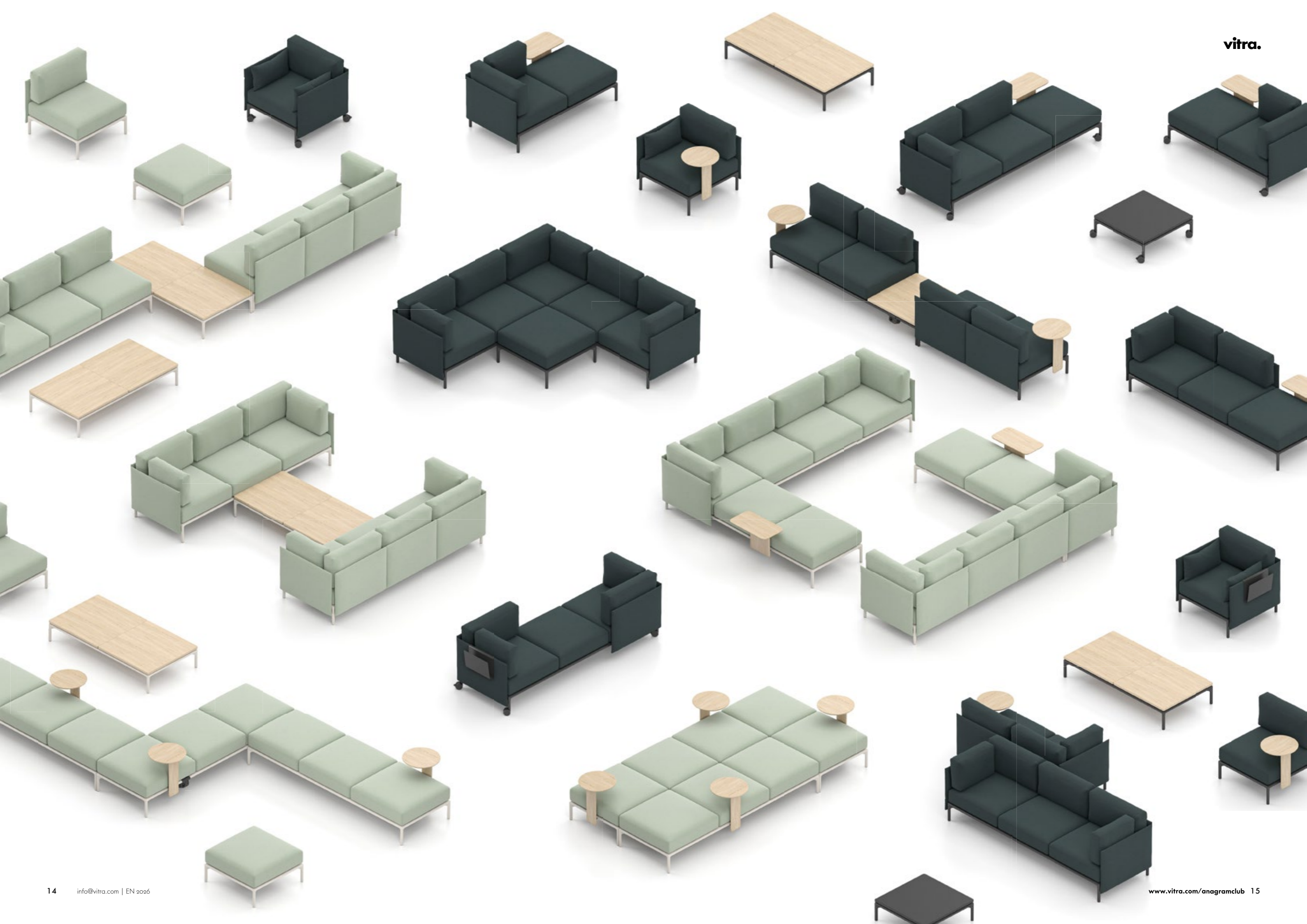
Stefano Panterotto and Alexis Tourron met while studying at the 'École cantonale d'art de Lausanne' (ECAL) – a university of art and design. They founded their own studio together in Lausanne in 2016, developing products and visual experiences at the intersection of design, technology and society. They have been collaborating with Vitra since 2023.



Click & play

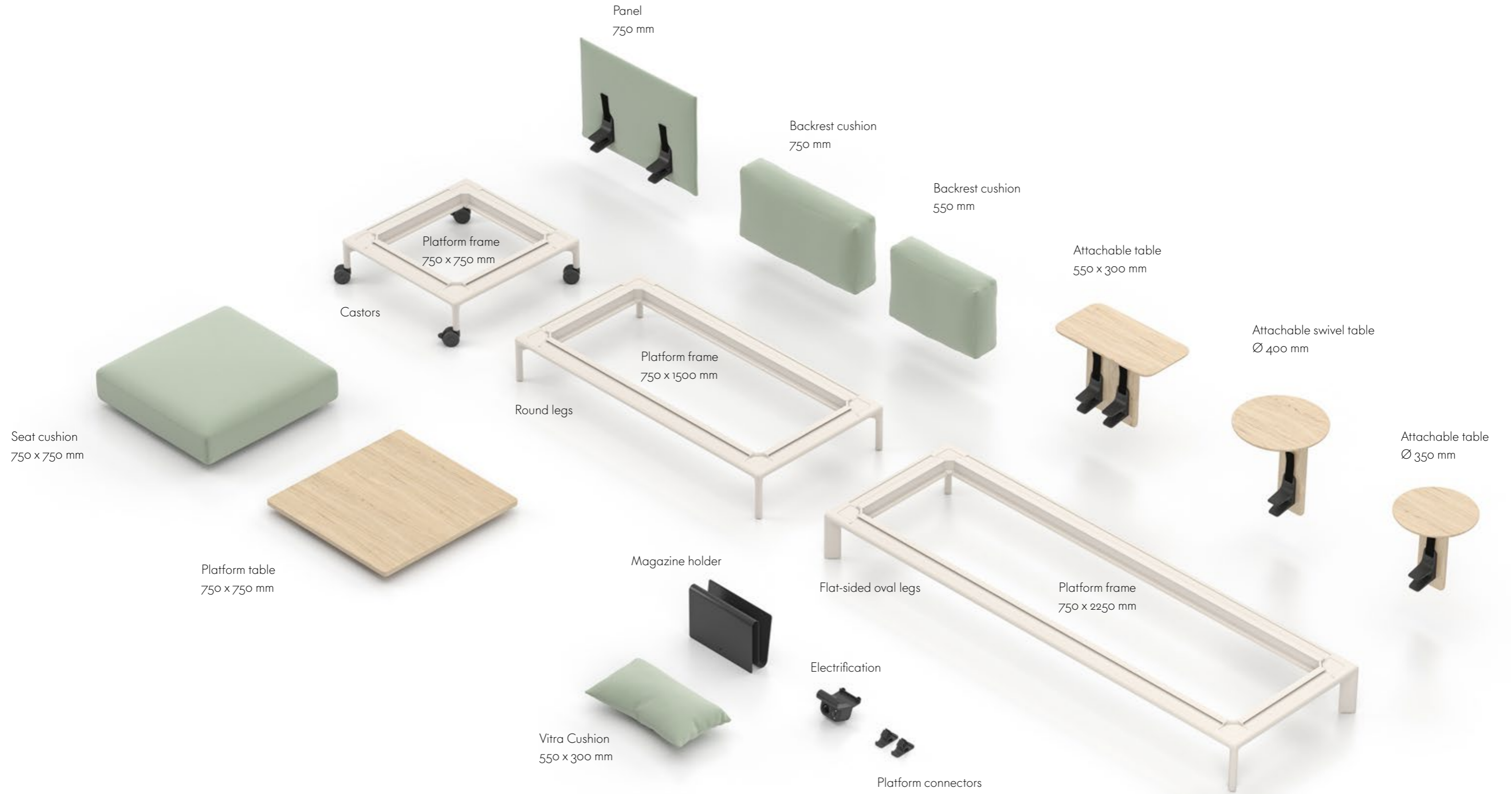
Quick and easy to adjust at any time.

Anagram Club adapts to the changing needs of work and hospitality environments: the platform modules can be flexibly combined and fitted with backrests, side panels and attachable tables. Thanks to the intuitive click mechanism, these elements can be freely positioned and rearranged in seconds. This enables countless configurations that can be modified time and again to suit new requirements – from compact two-seater sofas for informal meetings to expansive sofa landscapes.



Just a few parts, yet countless possibilities

The 14 available parts – modules and elements – can be assembled into a wide variety of configurations to meet different needs: small, large, one-sided, double-sided, alternating, closed, open etc. And as needs evolve, Anagram Club can be easily reconfigured.



Technical features

The platform modules are designed as islands that can be combined with other modules on all four sides and fitted with elements such as backrests, side panels and attachable tables.

360° platform

Adaptable to every need



vitra.

Click mechanism

vitra.



Thanks to an ingenious click mechanism, panels and attachable tables can be freely positioned anywhere on the platform and rearranged in a matter of seconds.

Castors and glides



Linking elements



The platform modules can be combined with other modules on all four sides. Platform connectors ensure stability and correct spacing between individual units.



The platform frames can be fitted with seat cushions or platform table tops. Thanks to the click mechanism, inserting, removing and repositioning the elements is quick and easy and requires no tools.





A panel is required behind each backrest cushion. In a corner configuration, a 550 mm-wide cushion and a 750 mm-wide cushion are used. The shorter cushion also serves as an armrest cushion.

The Vitra Cushion 550 x 300 mm can serve as a backrest cushion, an armrest cushion – as on the Anagram Club armchair – or a decorative cushion. An ottoman is formed from a single seat cushion without panels or additional cushions.



Anagram Club armchair with attachable swivel table



Anagram Club armchair on castors with attachable swivel table and Vitra Cushion 550 x 300 mm



Anagram Club armchair with Vitra Cushion 550 x 300 mm, on castors



Anagram Club Ottoman on castors

Attachable tables, electrification and magazine holder



Attachable tables can be positioned anywhere on the frame. The 550 x 300 mm and Ø 350 mm attachable tables are intended as side tables, while the slightly taller Ø 400 mm attachable swivel table is suitable for working with a laptop.

Electrification is provided through power sockets and USB ports and can be combined, for example, with an attachable table. The practical magazine holder simply slips over a panel.



Attachable table 550 x 300 mm



Attachable table Ø 350 mm



Attachable table Ø 400 mm, swivel



Electrification with power socket and USB-A/C



Magazine holder

Connecting modules

Please observe the following information regarding the connection of platforms.



Two platforms with seat cushions can be attached together using platform connectors. Two platform connectors are always required per link.



If a panel is inserted between two platforms, connectors cannot be used to link the platforms together. Pushing the platforms directly against each other can leave lasting indentations in the upholstered panel. The platforms should therefore always be positioned slightly apart.



If an attachable table is inserted between two platforms, the wider distance results in a gap between the seat cushions and connectors cannot be used to link the platforms together. Pushing the platforms directly against each other can leave marks in the wood of the table. The platforms should therefore always be positioned slightly apart.



If two platforms with side panels are positioned side by side, the gap between the platforms is around 10 cm and connectors cannot be used to link them together. Pushing the platforms directly against each other can leave lasting indentations in the upholstered panels. In this configuration always position the platforms so that there is a slight gap between the side panels.

Exchange & renew

Replaceable covers and materials that can be separated and recycled.

Anagram Club's covers can be removed for cleaning or replacement. Most of the upholstery consists of V-Foam developed by Vitra in collaboration with BASF as the world's first economically recyclable polyurethane foam. The lightweight frame is made of aluminium with 80% recycled content and, like all components, remains separate from other materials – nothing is glued, laminated or foamed. This means that the individual parts, which are manufactured from recycled materials wherever possible, can be easily dismantled at the end of the product's life for further recycling or responsible disposal.



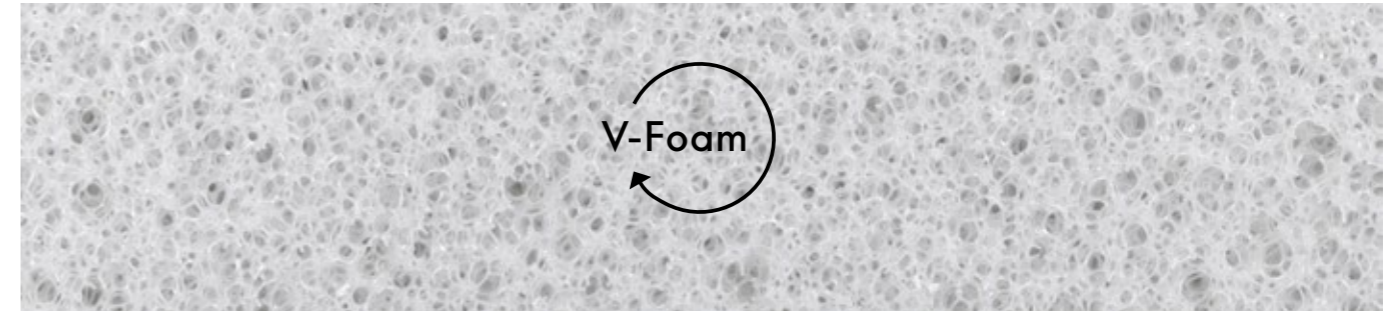
Frame and upholstery

vitra.

V-Foam - meltable PU foam

vitra.

Developed jointly by Vitra and BASF, V-Foam is the world's first economically recyclable polyurethane foam.



Standard polyurethane foam (PU foam) is derived from fossil fuels and utilised extensively worldwide. Its recycling process is very energy-intensive and uneconomical.

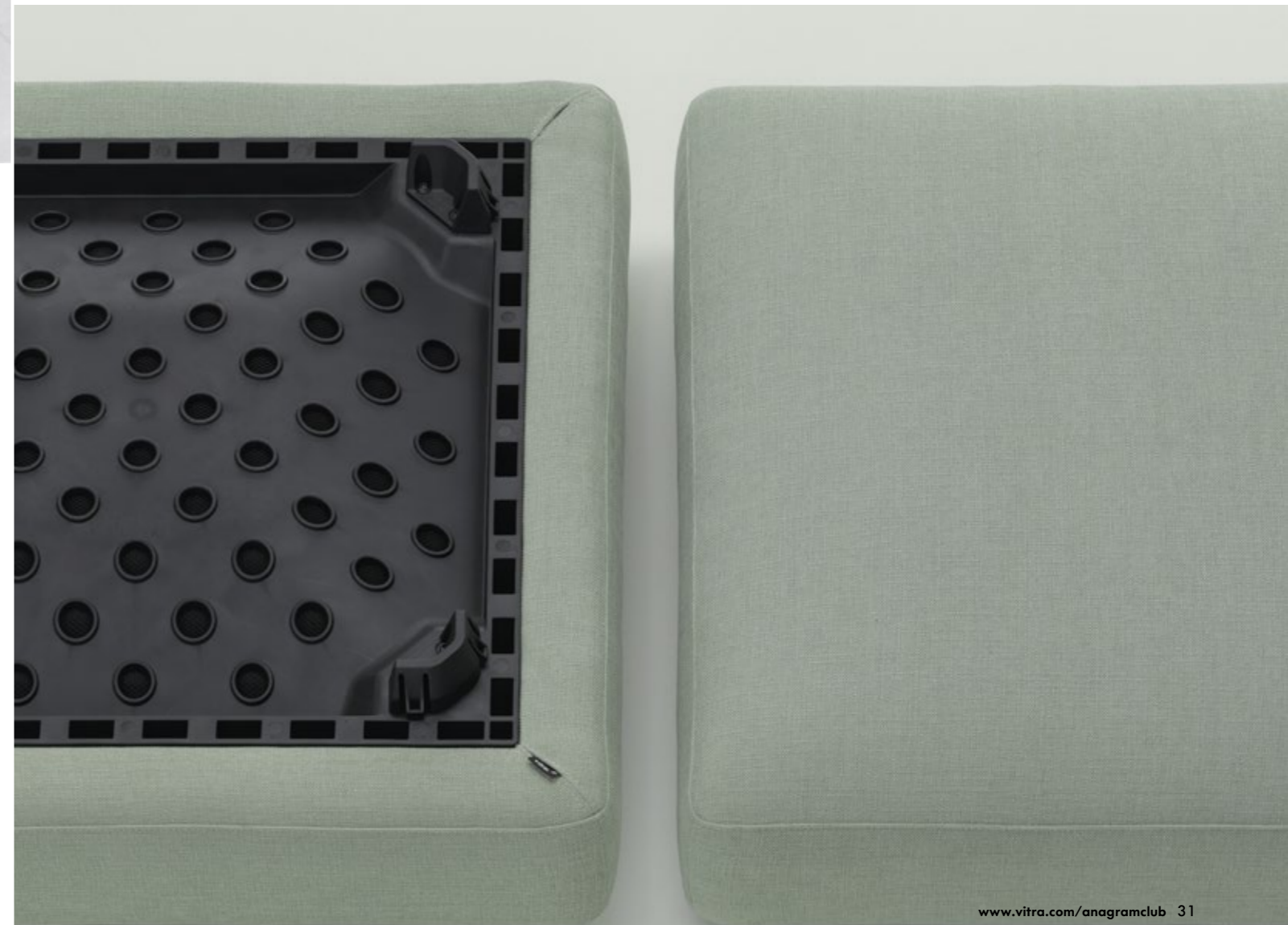
V-Foam, on the other hand, can be melted, reprocessed and returned to the material cycle in its entirety for use in new products. Vitra will gradually incorporate V-Foam for all its upholstered furniture containing moulded foam from 2025.

Due to British fire safety regulations, V-Foam is not used in the UK. Fire retardants would have to be added to the formula, which would make it impossible to recycle V-Foam separately.

Recycled aluminium



Alongside steel, aluminium is the metal most frequently used in Vitra's product portfolio. The production of recycled aluminium consumes only around 5% of the energy required for the extraction and processing of primary aluminium. All Vitra products that contain aluminium therefore include a substantial proportion of recycled material, which is being continually increased wherever technically feasible. The La Fonda base, for instance, contains 95% recycled aluminium. More than 90% of Vitra's aluminium components are sourced from suppliers in Europe.



Removable covers and maintenance



New covers, spare parts, care and cleaning



All the individual components of the Anagram Club are designed so that they can be replaced in the event of maintenance. New cushion covers, glides, connecting elements and other spare parts can be reordered at any time – for a particularly long service life.

Spare parts

Castors and glides can be ordered directly from the vitra.com website. For other spare parts, please contact Vitra or your local Vitra partner.



Care instructions

Here you will find care instructions for cover fabrics, leather, plastics and metals.



Vegan cushion filling made of recycled PET fibres



The softly comfortable and inviting cushions are filled with 100% recycled PET fibres that are separable and recyclable. Polyester fibres have very good elastic properties.

Certificates

vitra.

To offer transparency with regard to a product's most important environmental factors, Vitra provides certificates from external testing institutes. For this purpose, Vitra focuses on a selection of certificates that explicitly cover key elements of the respective product.

Greenguard Gold

The GREENGUARD GOLD label for indoor air quality recognises products that contribute to the creation of healthier indoor environments.



GS

With the GS seal for tested safety, a state-authorized inspection institute certifies the suitability and safety of the construction and monitors production at regular intervals.



BIFMA

Anagram fulfils the ANSI/BIFMA standard X5.1-2011, thus meeting the stringent safety requirements for the US market.

BIFMA

EPD

An EPD – environmental product declaration – provides transparency about the environmental impacts of a product throughout its life cycle, often referred to as life cycle assessment (LCA).



Upright comfort for short breaks and spontaneous meetings.

Anagram Club's supportive cushioning and more upright seating geometry encourage an active posture – making it ideal for ad hoc meetings, spontaneous collaboration, impromptu encounters, brief rests or relaxed waiting. The upholstered panels can be flexibly positioned to suit any configuration,

while additional components – such as swivel or platform tables, a club chair, an ottoman and power connections – expand the range of applications. With its compact dimensions and durable materials, Anagram Club is designed for high-traffic environments but works equally well in smaller living spaces where a more upright sitting position is preferred.











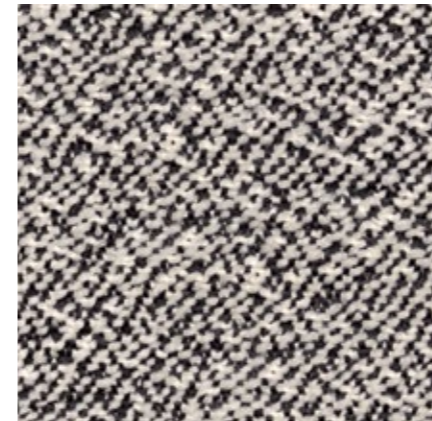








Cento Medium use, F120

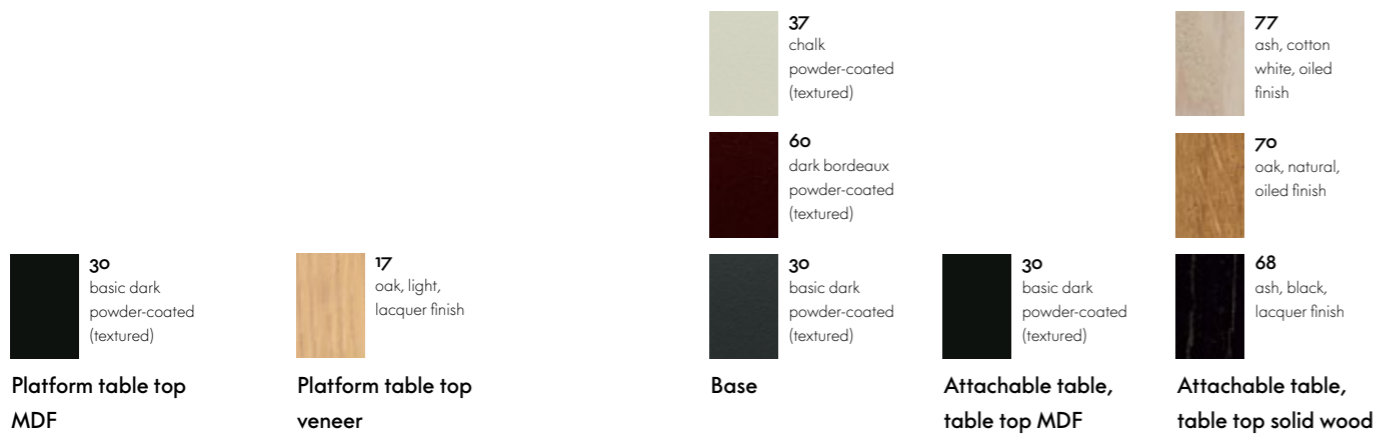


Cento is made of 100% high-quality virgin wool. Its bouclé appearance and three-dimensional structure create a lively surface texture with a voluminous granular feel. Thanks to the sustainable purity of the wool, Cento has been granted the EU Ecolabel.

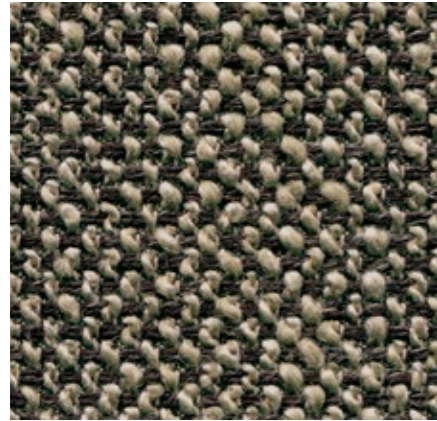
Cento is available in 14 colours.

Material	100% new wool
Weight	620 g/m ² (18.3 oz/y ²)
Width	147 cm +/- 2 cm (58")
Abrasion resistance	30,000 Martindale
Fastness to light	Type 5
Pilling	Grade 4-5
Fastness to rubbing	Grade 4 dry and wet

Cento



Corsaro Medium use, F80



Corsaro is a sophisticated combination of fine and coarse yarns that give the fabric a natural look with a Mediterranean flair. The two-tone and three-tone shades interwoven with several novelty yarns add particular vibrancy to large surface areas.

Corsaro is available in 13 colours.

Material	5% polyamide, 46% polyacrylics, 5% linen, 20% wool, 14% polyester, 10% cotton
Weight	450 g/m ² (13.3 oz/y ²)
Width	140 cm +/- 2 cm (55")
Abrasion resistance	35,000 Martindale
Fastness to light	Type 5
Pilling	Grade 3-4
Fastness to rubbing	Grade 3-4 dry and wet

Corsaro



vitra.

Credo Heavy use, F120



Credo is a durable woollen fabric made of premium worsted yarn with a pleasant feel. The two- and three-tone colours give this fabric a characteristic structure and vibrant appearance. Credo allows for an effective exchange of heat to ensure comfortable thermal conditions for the sitter. The fabric can also be used in office environments.

Credo is available in 22 colours.

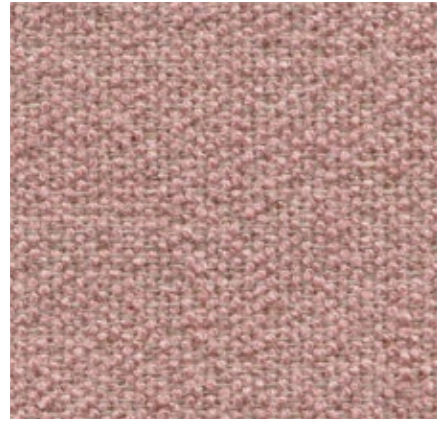
Material	5% polyamide, 95% new wool
Weight	640 g/m ² (18.9 oz/y ²)
Width	145 cm +/- 2 cm (57")
Abrasion resistance	100,000 Martindale
Fastness to light	Type 6
Pilling	Grade 4-5
Fastness to rubbing	Grade 4-5 dry and wet

vitra.

Credo



Dumet Medium use, F80



Dumet is a cotton blend in a plain weave with a lively appearance. The natural mixed tones create an elegant look with an Italian flair. Dumet is soft and cool to the touch.

Dumet is available in 20 colours.

Dumet



vitra.

Material 9% polyamide, 8% linen,
22% wool, 46% cotton,
15% rayon

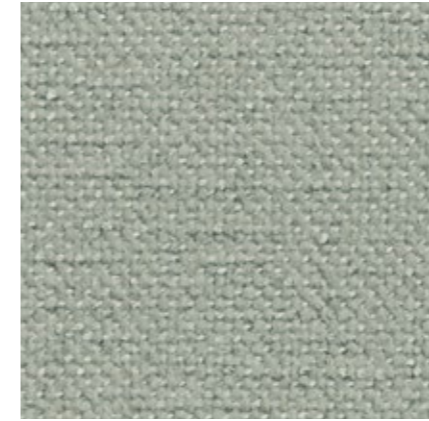
Weight 485 g/m² (14.3 oz/y²)
Width 147 cm +/- 2 cm (58")

Abrasion resistance 40,000 Martindale

Fastness to light Type 5

Pilling Grade 3-4
Fastness to rubbing Grade 3-4 dry
and wet

Hola Medium use, F40



Hola is a textile made from 100% recycled polyester. Its finely textured threads are woven into a soft comfortable fabric with an understated expression and almost cotton-like feel. It is simultaneously also resilient enough to be used in semi-public spaces such as hotel lobbies. Hola is Oeko-tex-certified and manufactured using a dyeing process with a closed water cycle.

Hola is available in 11 colours.

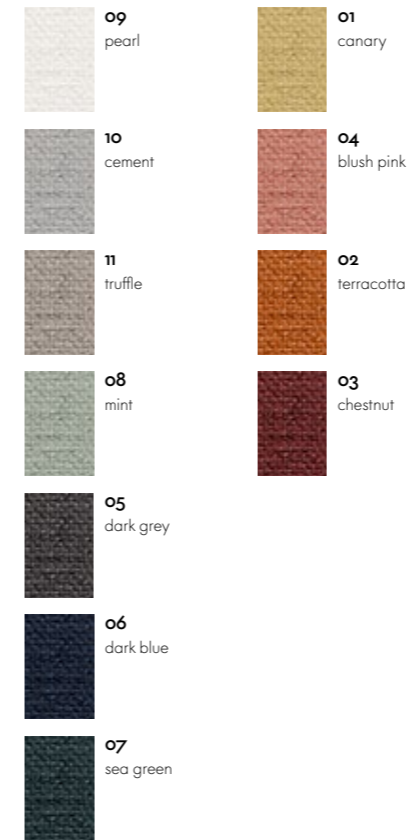
vitra.

Material 100% recycled
polyester
Weight 470 g/m² (13.9 oz/y²)
Width 142 cm +/- 2 cm (56")
Abrasion resistance 60,000 Martindale

Fastness to light Type 5

Pilling Grade 4-5
Fastness to rubbing Grade 4-5 dry
and wet

Hola



Iroko 2 Medium use, F80



Iroko 2 is a soft, flat woven fabric made with chenille yarn. The piles in the yarn give the weave a lively surface texture with an inviting, velvety touch. The fabric's cotton fibres provide excellent cooling properties.

Iroko 2 is available in 17 colours.

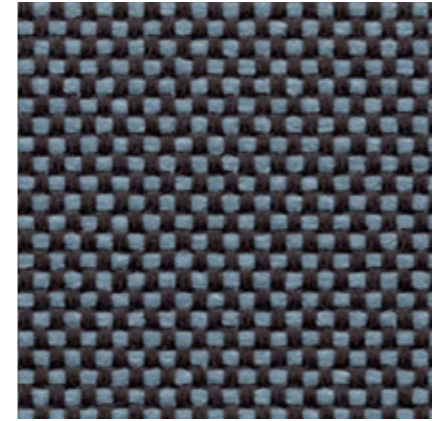
Material	48% polyacrylics, 20% polyester, 32% cotton
Weight	700 g/m ² (20.6 oz/y ²)
Width	152 cm +/- 3 cm (60")
Abrasion resistance	40,000 Martindale
Fastness to light	Type 5
Pilling	Grade 3-4
Fastness to rubbing	Grade 3-4 dry and wet

Iroko 2



vitra.

Laser RE Heavy use, F40



The environmentally friendly fabric Laser RE is made from recycled polyester. It has a distinctive woven appearance, which is particularly accentuated by contrasting duotones in a varied palette of 25 colours. Practical and easy to care for, as well as durable and highly abrasion-resistant, Laser RE is also well suited for office environments.

Laser RE is available in 25 colours.

Material	100% recycled polyester
Weight	520 g/m ² (15.3 oz/y ²)
Width	144 cm +/- 2 cm (57")
Abrasion resistance	100,000 Martindale
Fastness to light	Type 6
Pilling	Grade 4-5
Fastness to rubbing	Grade 4-5 dry and wet

vitra.

Laser RE



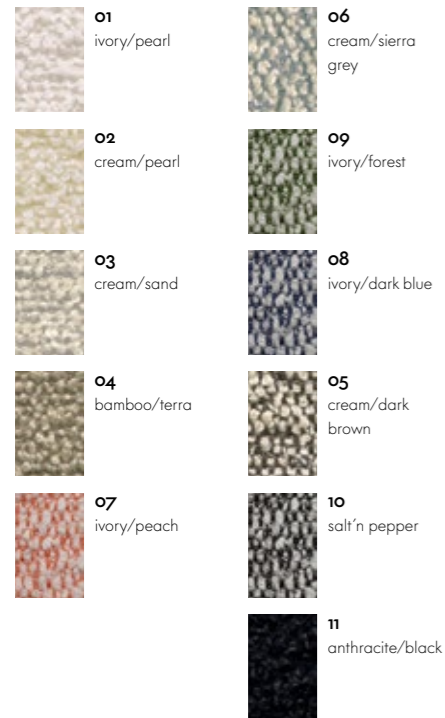
Nubia Medium use, F100



Nubia is a blended fabric with a very lively, natural appearance. Its fine substructure is interspersed with voluminous bouclé yarn, which gives the fabric depth and a soft, inviting touch. The varying combinations of yarns yield either contrasting or calm colour compositions with a distinctly Mediterranean flair.

Nubia is available in 11 colours.

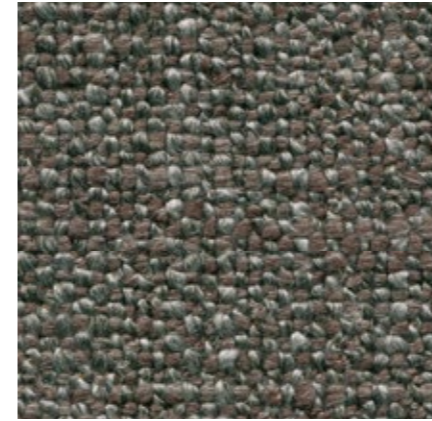
Nubia



vitra.

Material	2% polyamide, 30% new wool, 25% polyacrylics, 43% polyester
Weight	570 g/m ² (16.8 oz/y ²)
Width	140 cm (55")
Abrasion resistance	35,000 Martindale
Fastness to light	Type 5
Pilling	Grade 4
Fastness to rubbing	Grade 3-4 dry and wet

Savana Residential use, F80



Savana is a blended fabric woven from yarns of varying thickness, which give it an irregular texture with a lively and elegant appearance. A palette of subdued and natural earth tones, along with the dry, pleasant feel of the textile, emphasise the fabric's Italian flair.

Savana is available in 8 colours.

Savana



vitra.

Material	8% polyamide, 50% polyacrylics, 23% linen, 19% cotton
Weight	820 g/m ² (24.2 oz/y ²)
Width	140 cm (55")
Abrasion resistance	30,000 Martindale
Fastness to light	Type 5
Pilling	Grade 3-4
Fastness to rubbing	Grade 3-4 dry and wet

Skai Pureto EN Heavy use, F60



Skai Pureto EN is a high-quality and durable PVC-free artificial leather. It mirrors the gentle texture of calfskin and has a similar feel to natural leather. Skai Pureto EN is a sustainable material, which is water-based as well as solvent-free. It is lightfast, robust and easy to clean, making it also suitable for areas of intensive use.

Skai Pureto EN is available in 7 colours.

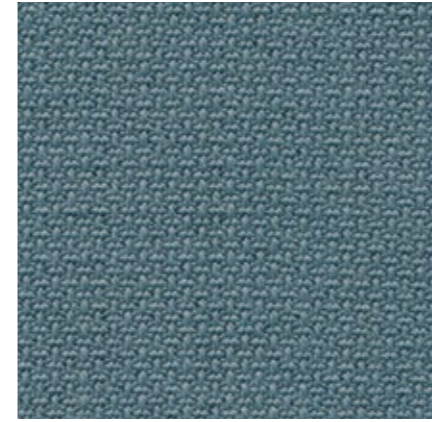
Skai Pureto EN



vitra.

Material	60% polyurethane, 19% polyester, 21% cotton
Weight	640 g/m ² (18.9 oz/y ²)
Width	142 cm (56")
Abrasion resistance	100,000 Martindale
Fastness to light	Type 6
Fastness to rubbing	Grade 4-5 dry and wet

Volo Heavy use, F60



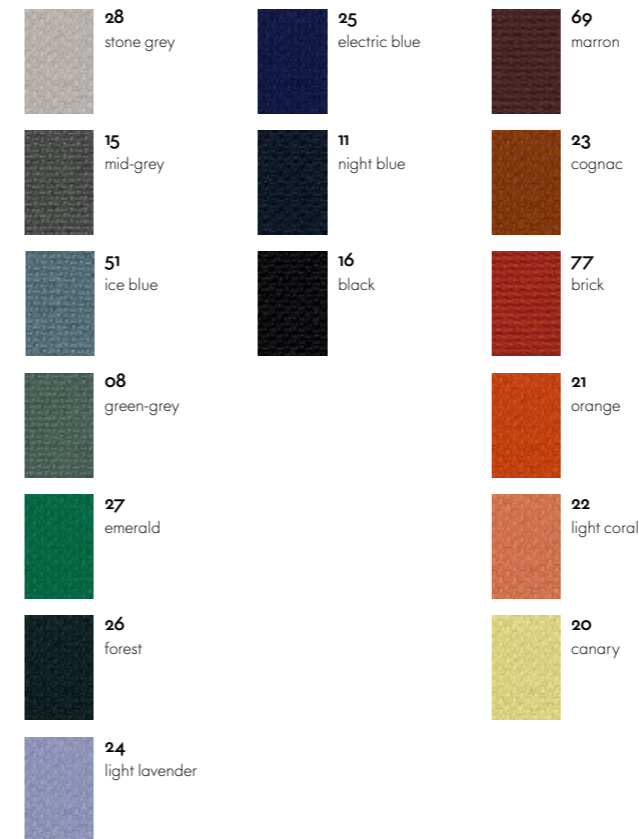
Volo is a finely structured wool blend with a refined weave that gives it an elegant appearance. This expressive textile shows strong solid colours to full advantage while simultaneously offering pleasant tactile qualities. With its soft look and appealing texture, Volo is a perfect fit for home interiors, but it is also well suited for use in the contract sector.

Volo is available in 16 colours.

vitra.

Material	15% polyamide, 85% new wool
Weight	435 g/m ² (12.8 oz/y ²)
Width	145 cm +/- 3 cm (57")
Abrasion resistance	100,000 Martindale
Fastness to light	Type 6
Pilling	Grade 4-5
Fastness to rubbing	Grade 4-5 dry and wet

Volo



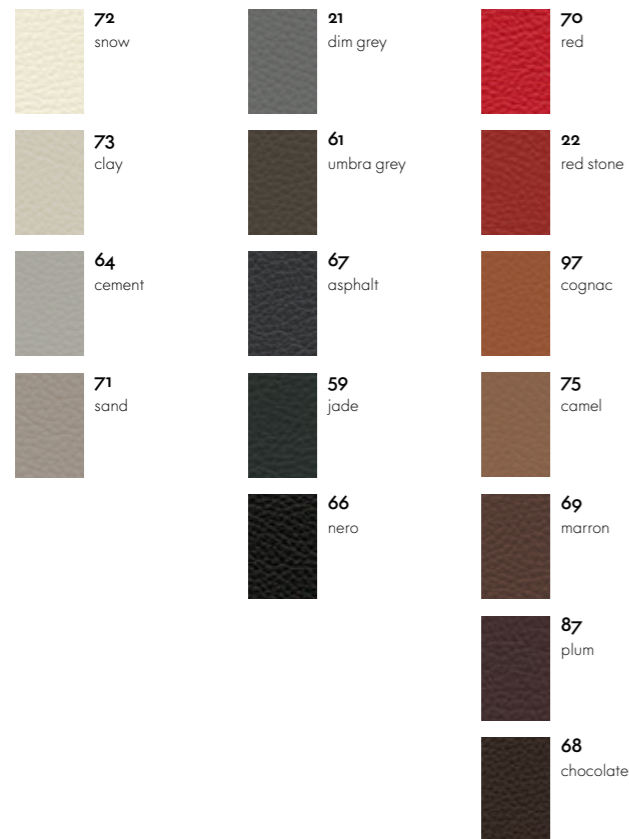
Leather Heavy use, L2o



The standard grade leather used by Vitra is a robust cowhide leather, dyed-through, pigmented and embossed with an even grain pattern. Since it is hard-wearing and easy to maintain, it can also be used in office environments.

Leather is available in 16 colours.

Leather



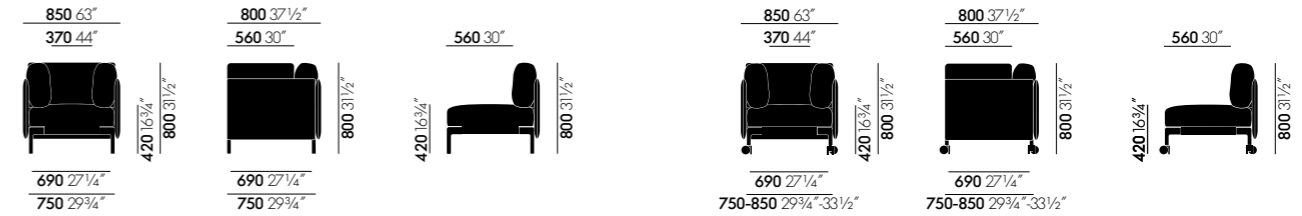
vitra.

Material	Robust cowhide with a distinctive, even grain
Fastness to light	Type 6
Thickness	1,1-1,3 mm
Fastness to rubbing	Grade 4 dry and wet

Dimensions

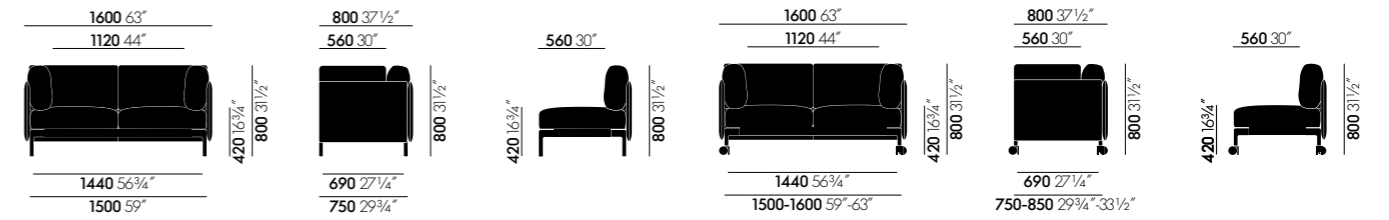
(in accordance with EN 1335-1:2000)

vitra.



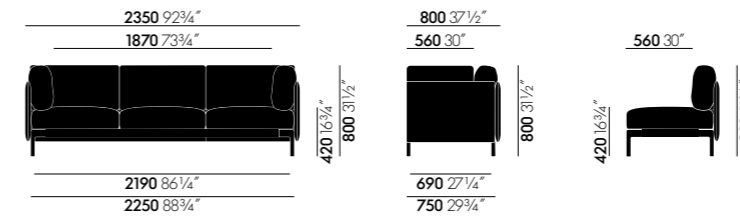
Anagram Club armchair 750

Anagram Club armchair 750, castors

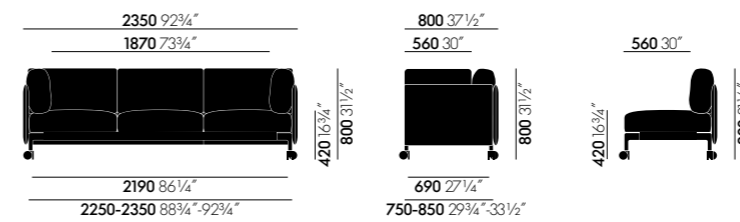


Anagram Club sofa 1500

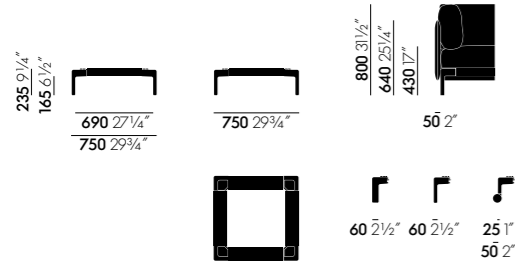
Anagram Club sofa 1500, castors



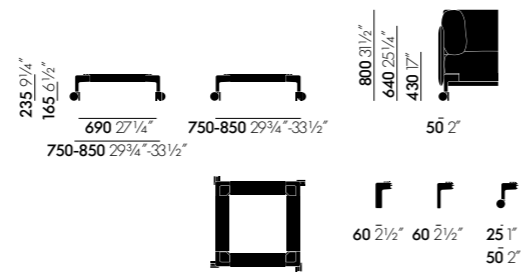
Anagram Club sofa 2250



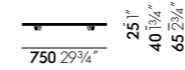
Anagram Club sofa 2250, castors



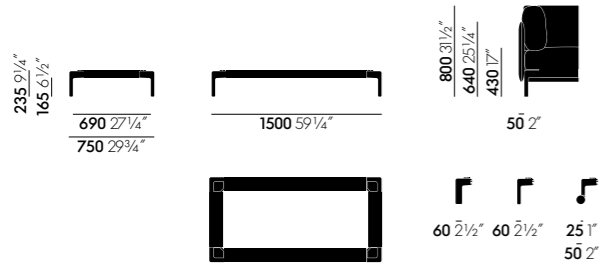
Anagram Club platform frame 750 x 750



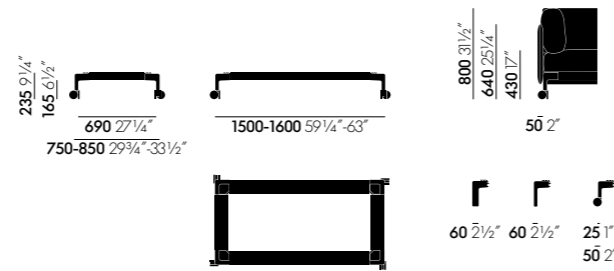
Anagram Club platform frame 750 x 750, castors



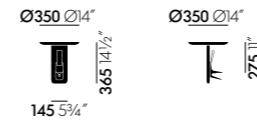
Anagram Club platform table 750 x 750



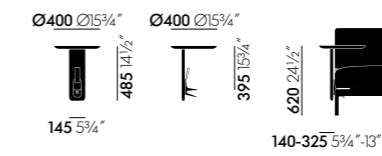
Anagram Club platform frame 750 x 1500



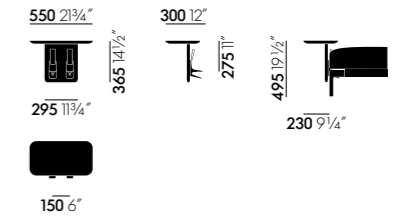
Anagram Club platform frame 750 x 1500, castors



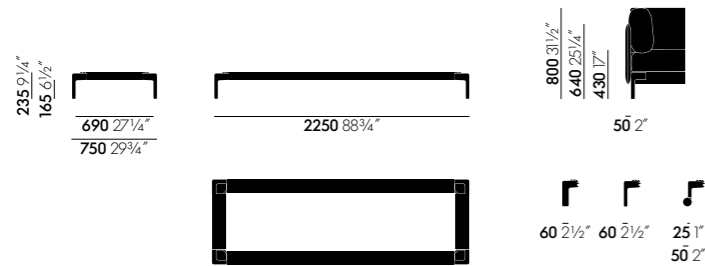
Anagram Club attachable table Ø 350



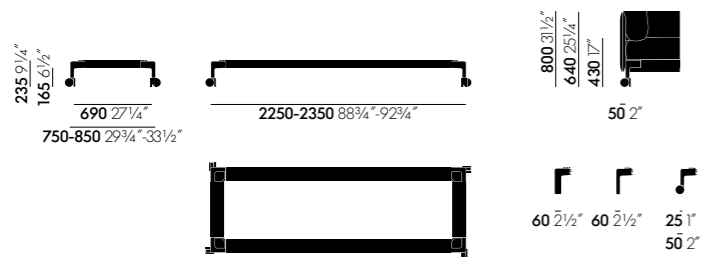
Anagram Club attachable table, swivel table top, Ø 400



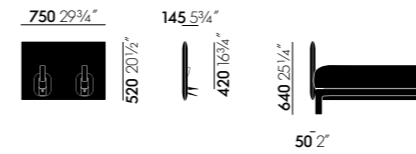
Anagram Club attachable table 300 x 550



Anagram Club platform frame 750 x 2250



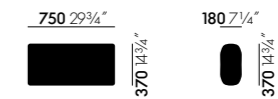
Anagram Club platform frame 750 x 2250, castors



Anagram Club panel 750



Anagram Club back cushion 550



Anagram Club back cushion 750



Anagram Club seat cushion 750 x 750